

# MONTHLY MEMBERSHIP PROGRESS REPORT

LOCATION WISCONSIN

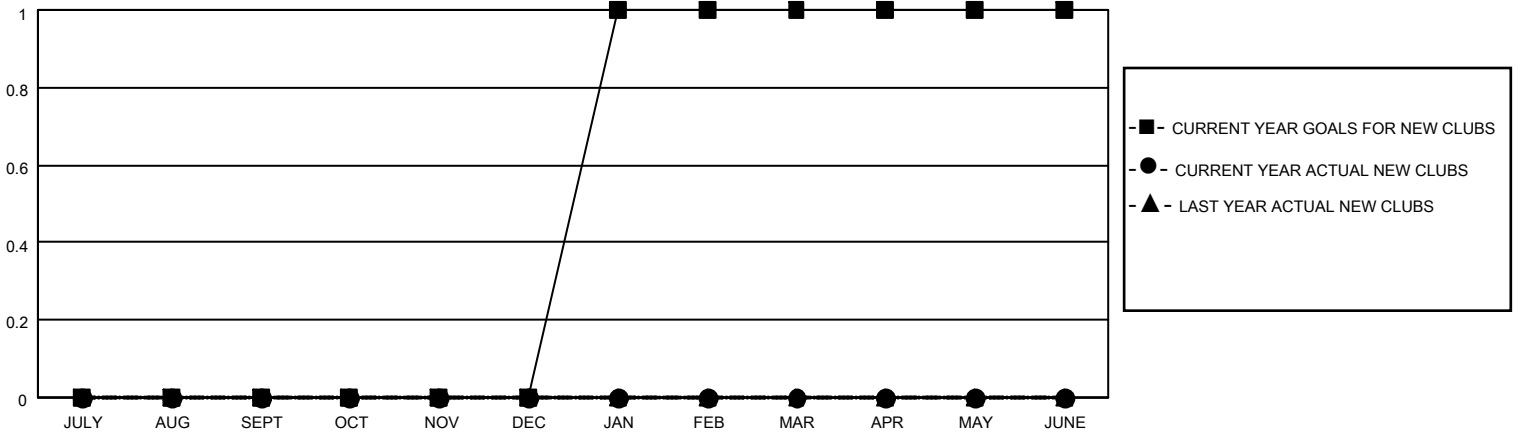
District 27 D2

Results as of: 8/31/2020

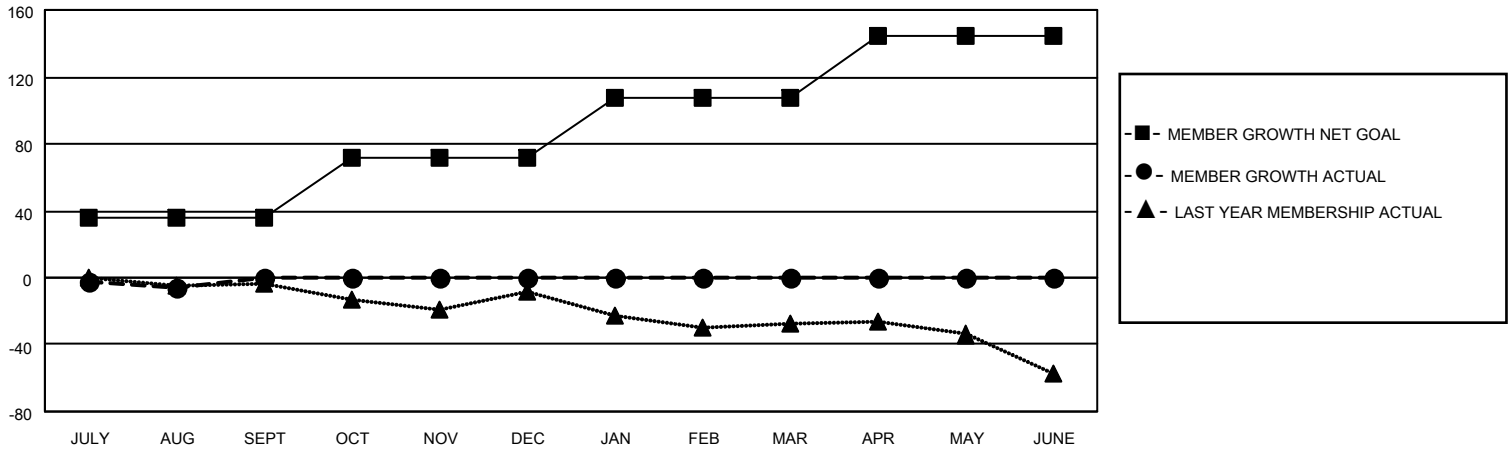
Clubs			
RESULTS FOR 2020-2021			
QUARTER	NEW CLUB GOAL	NEW CLUBS	DROPPED CLUBS
JULY/AUG/SEPT	0	0	0
OCT/NOV/DEC	0	0	0
JAN/FEB/MAR	1	0	0
APR/MAY/JUNE	0	0	0

Members			
RESULTS FOR 2020-2021			
QUARTER	MEMBER GROWTH NET GOAL	MEMBER GROWTH ACTUAL	DROPPED MEMBERS ACTUAL (including transfers)
JULY/AUG/SEPT	36	32	37
OCT/NOV/DEC	36	0	0
JAN/FEB/MAR	36	0	0
APR/MAY/JUNE	36	0	0

**GOALS AND ACTUAL NEW CLUBS CUMULATIVE**



**GOALS AND ACTUAL MEMBERS CUMULATIVE**



DROPPED CLUBS: 0	12 CLUBS OF 48 ADDED 1 OR MORE NEW MEMBERS	<p style="text-align: center;"><u>GENDER DISTRIBUTION</u></p> <p>MALE            1,152 (73.75%)</p> <p>FEMALE         410 (26.25%)</p>
<p style="text-align: center;"><u>DROPPED MEMBERS</u></p> <p>DECEASED            3</p> <p>CLUB CANCELLED     0</p> <p>OTHER                 34</p> <hr/> <p>TOTAL                 37</p>	<p><a href="#">CLICK HERE FOR CUMULATIVE MEMBERSHIP DATA</a></p>	<p>TOTAL FAMILY UNIT MEMBERS            339</p> <p>FAMILY MEMBERS PAYING HALF DUES            174</p>